

Excimer light phototherapy device

**TheraBeam® UV308**

Specifications

Product Name	TheraBeam UV308
Wavelength	308nm
Irradiation Area (when using attachment)	120mm x 100mm (100mm x 80mm) (Approx)
Rated Voltage	AC100~240V
Rated Frequency	50/60Hz
Dimensions	500mm(W) x 1150mm(D) x 1300mm(H) (Approx)
Weight	Approx. 40kg
Temperature/Humidity Range	10°C~30°C, 30%~75%RH (no condensation)

\*Specifications and design may be improved or changed without notice.

**Applications:** Psoriasis, vitiligo vulgaris, atopic dermatitis, parapsoriasis, palmoplantar psoriasis, mycosis fungoides (syndrome), cutaneous T-cell lymphoma, pityriasis lichenoides chronica

Bundled items

Light-Blocking Sheet: 1



Light-Blocking Glasses  
(2; for technician and patient)



Irradiation attachment: 1



Air filter: 1 (spare)

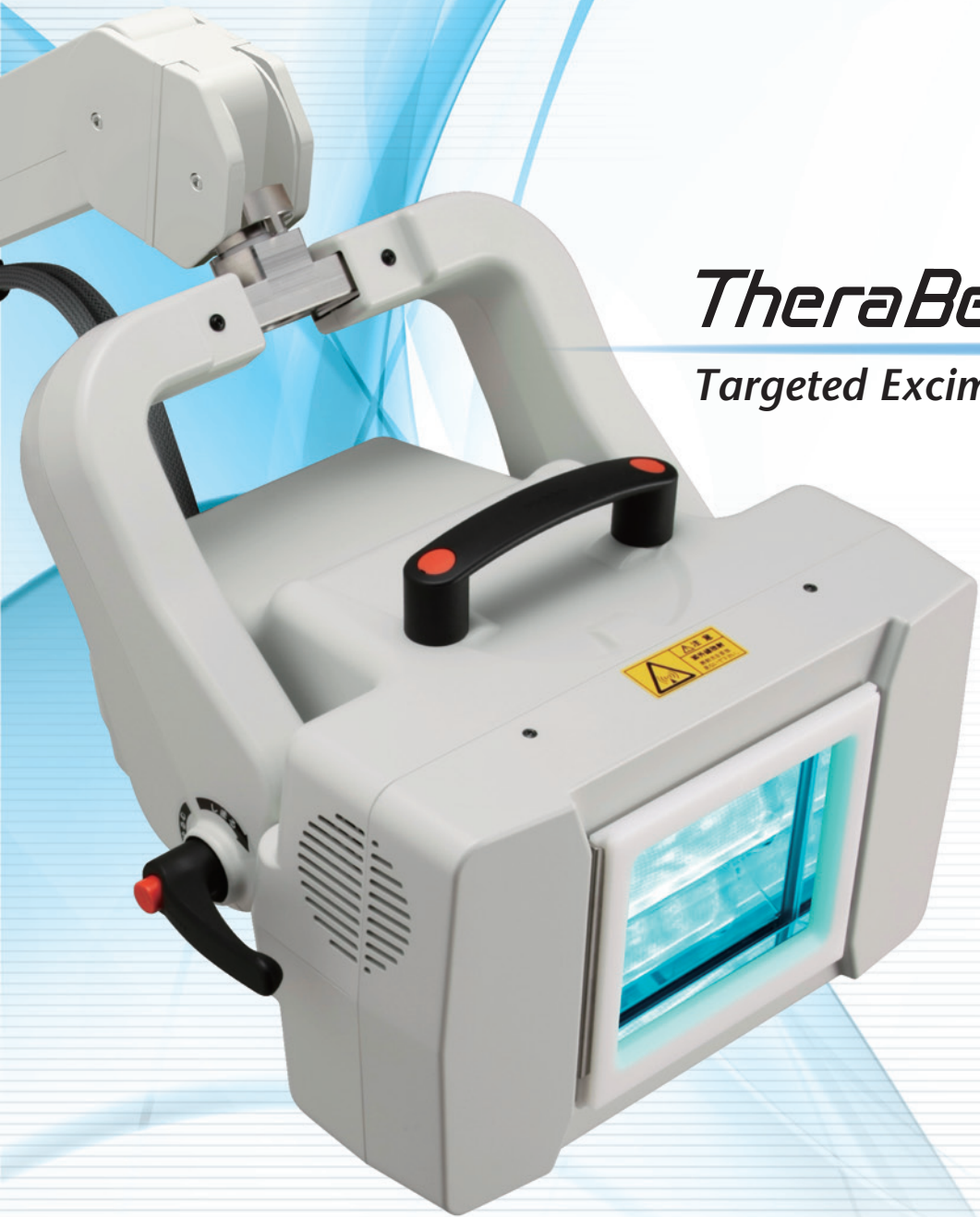


Excimer light phototherapy device



**TheraBeam® UV308**

Targeted Excimer Light



**USHIO**

USHIO INC.

2-6-1 Otemachi, Chiyoda-ku,  
Tokyo, Japan 100-8150

E-mail : [thera@ushio.co.jp](mailto:thera@ushio.co.jp)

[www.ushio.co.jp](http://www.ushio.co.jp)

Sales Agent

**USHIO**

Lighting—Edge Technologies



# Using the new **Excimer Filter** to pursue efficacy and safety!

## Excimer light phototherapy device

Made in Japan "Targeted phototherapy" Excimer Light

Excimer light phototherapy device  
**TheraBeam® UV308**

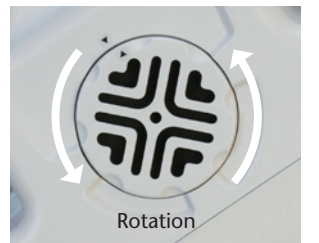


### Detachable attachment



Enables easy irradiation even for treatment of deep areas such as the cervical region and axilla. Easily attached and detached.

### Easy maintenance



The dust filter is easily replaced through one-touch operation.

**Excimer UV**

### Safety

**TheraBeam UV 308** is equipped with a new **Excimer Filter** (patent), which has passed precise cell testing and clinical evaluation. Excimer Filter is an optical filter which cuts a shorter wavelength causing erythema. Our first priority is to ensure safety for doctors and patients who use our devices.

### Targeted Phototherapy

When beginning from systemic treatment and then moving to treatment of localized reoccurrence and rashes remaining only in certain areas, **TheraBeam UV 308** offers **targeted phototherapy** for additional treatment. The excimer light prevents excessive irradiation of healthy skin areas and enables pinpoint irradiation on refractory.

### Large Irradiated Areas

It is possible to irradiate largely an area approx. 120×100mm, which is approximately the same size as one hand.

Operation is easy. Place for the target area, and press the "Start Button."



Irradiation time (example)

**1MED irradiation time: 15 sec.**

Average 1MED (307mJ/cm<sup>2</sup>) for Japanese people  
(Average irradiation intensity 20mW/cm<sup>2</sup>.)

Timer control



Simple operation panel

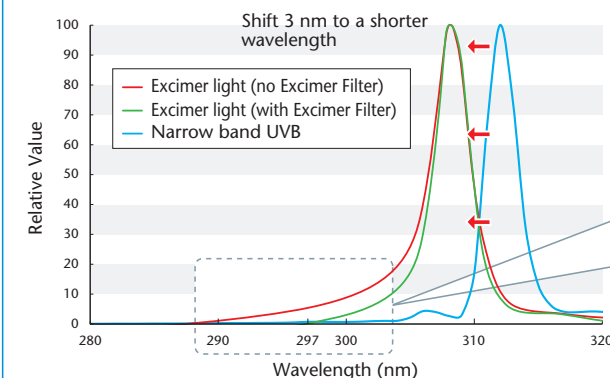


The precision technology of the new 308 nm Excimer light and Excimer Filter deliver optimal UV rays for patients

### Wavelength Comparison

A wavelength shorter than narrow band UVB

By shifting the wavelength peak by 3 nm to the 308 nm side, better treatment effect would be expected.



### Excimer Filter

Compatibility of safety with efficacy

The new **Excimer Filter** cuts unnecessary short wavelengths.

